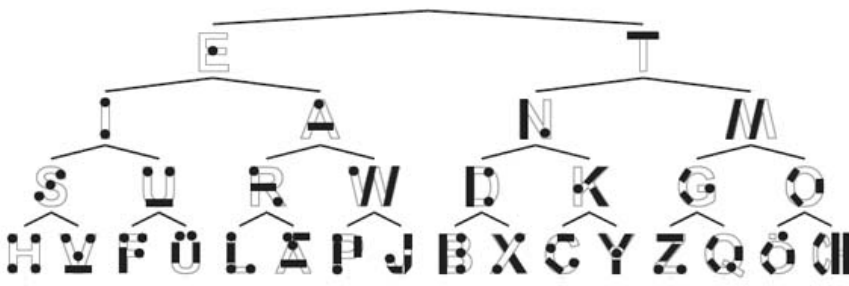


	decimal	binary	ternary	Braille	Morse	semaphore	radio
a	1	00001	001	⠁	·-	⠠	alpha
b	2	00010	002	⠃	··-	⠠	bravo
c	3	00011	010	⠉	···-	⠠	charlie
d	4	00100	011	⠑	··-	⠠	delta
e	5	00101	012	⠑	·	⠠	echo
f	6	00110	020	⠑	···-	⠠	foxtrot
g	7	00111	021	⠑	··-	⠠	golf
h	8	01000	022	⠑	···-	⠠	hotel
i	9	01001	100	⠑	·	⠠	india
j	10	01010	101	⠑	···-	⠠	juliet
k	11	01011	102	⠑	··-	⠠	kilo
l	12	01100	110	⠑	···-	⠠	lima
m	13	01101	111	⠑	··-	⠠	mike
n	14	01110	112	⠑	·	⠠	november
o	15	01111	120	⠑	··-	⠠	oscar
p	16	10000	121	⠑	···-	⠠	papa
q	17	10001	122	⠑	···-	⠠	quebec
r	18	10010	200	⠑	··-	⠠	romeo
s	19	10011	201	⠑	··-	⠠	sierra
t	20	10100	202	⠑	·	⠠	tango
u	21	10101	210	⠑	··-	⠠	uniform
v	22	10110	211	⠑	···-	⠠	victor
w	23	10111	212	⠑	··-	⠠	whiskey
x	24	11000	220	⠑	···-	⠠	x-ray
y	25	11001	221	⠑	···-	⠠	yankee
z	26	11010	222	⠑	···-	⠠	zulu

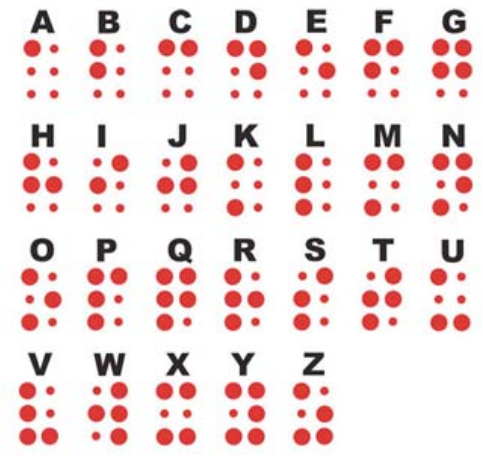
semaphore
(in groups by
direction pairs)



Morse
(tree form)



Braille
(enlarged)



Approved by
Captain Code Sheet
for BANG 23